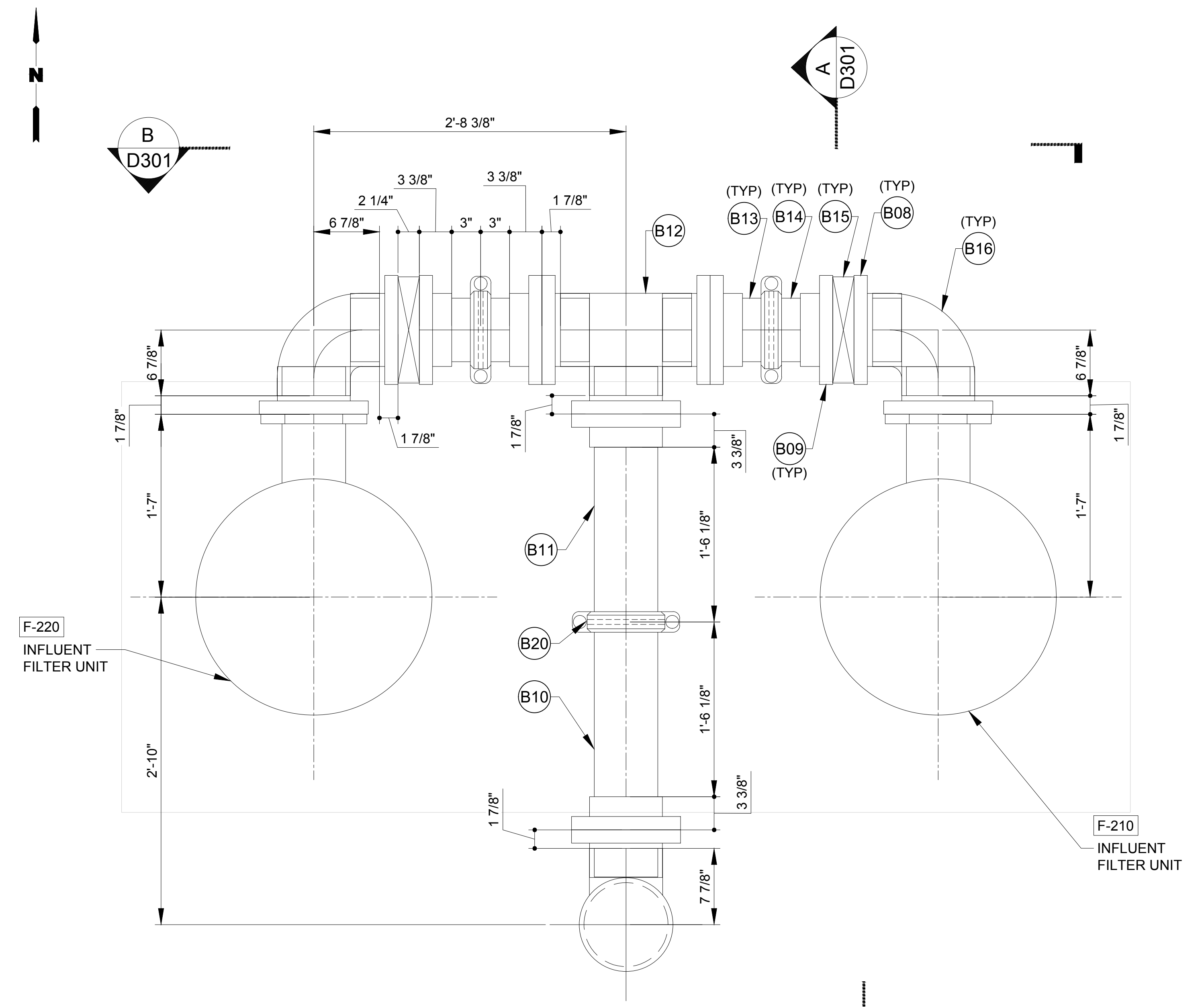


OUTLET PIPING PLAN



INLET PIPING PLAN

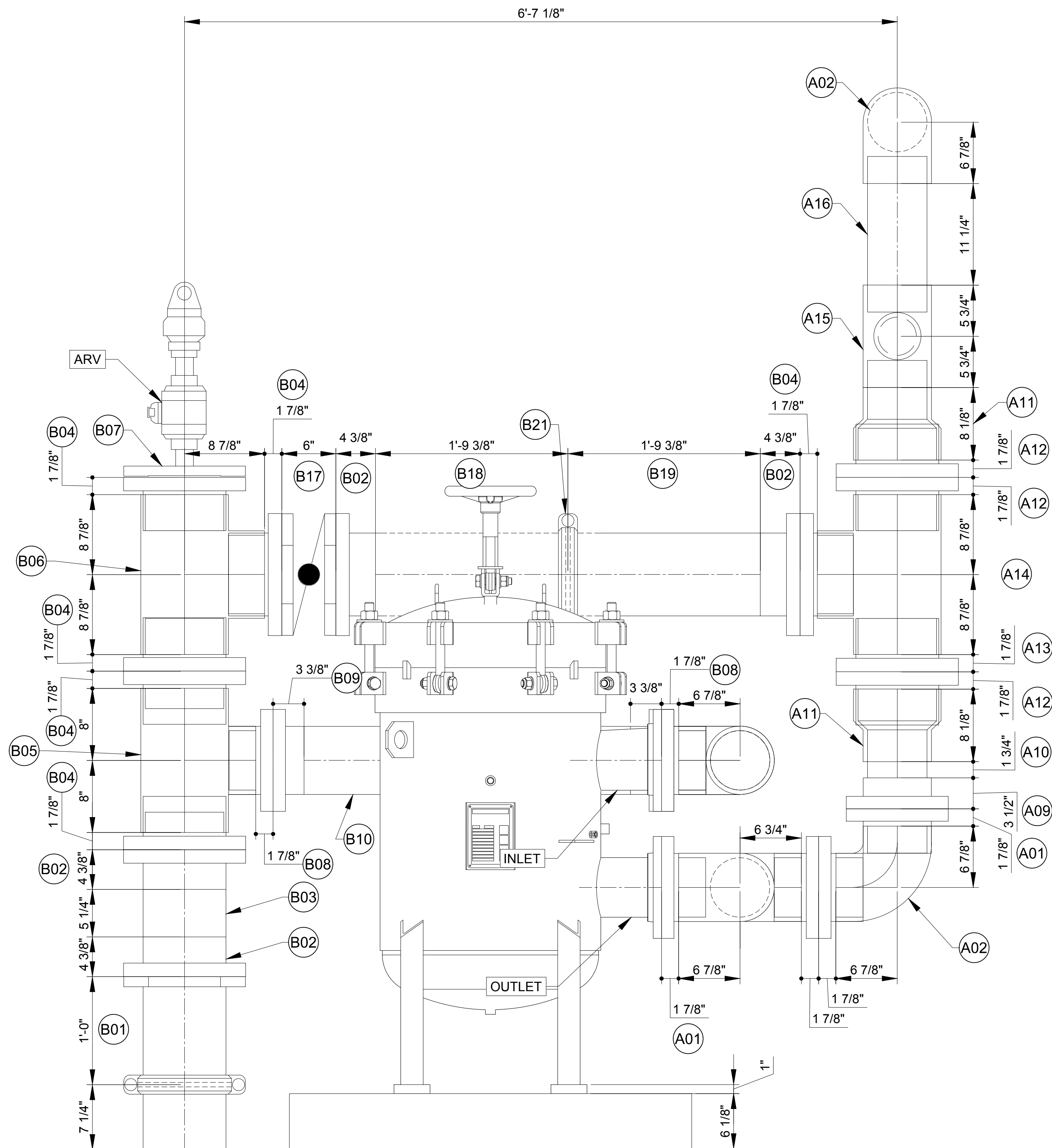
OWNER:-

ENGINEER:-

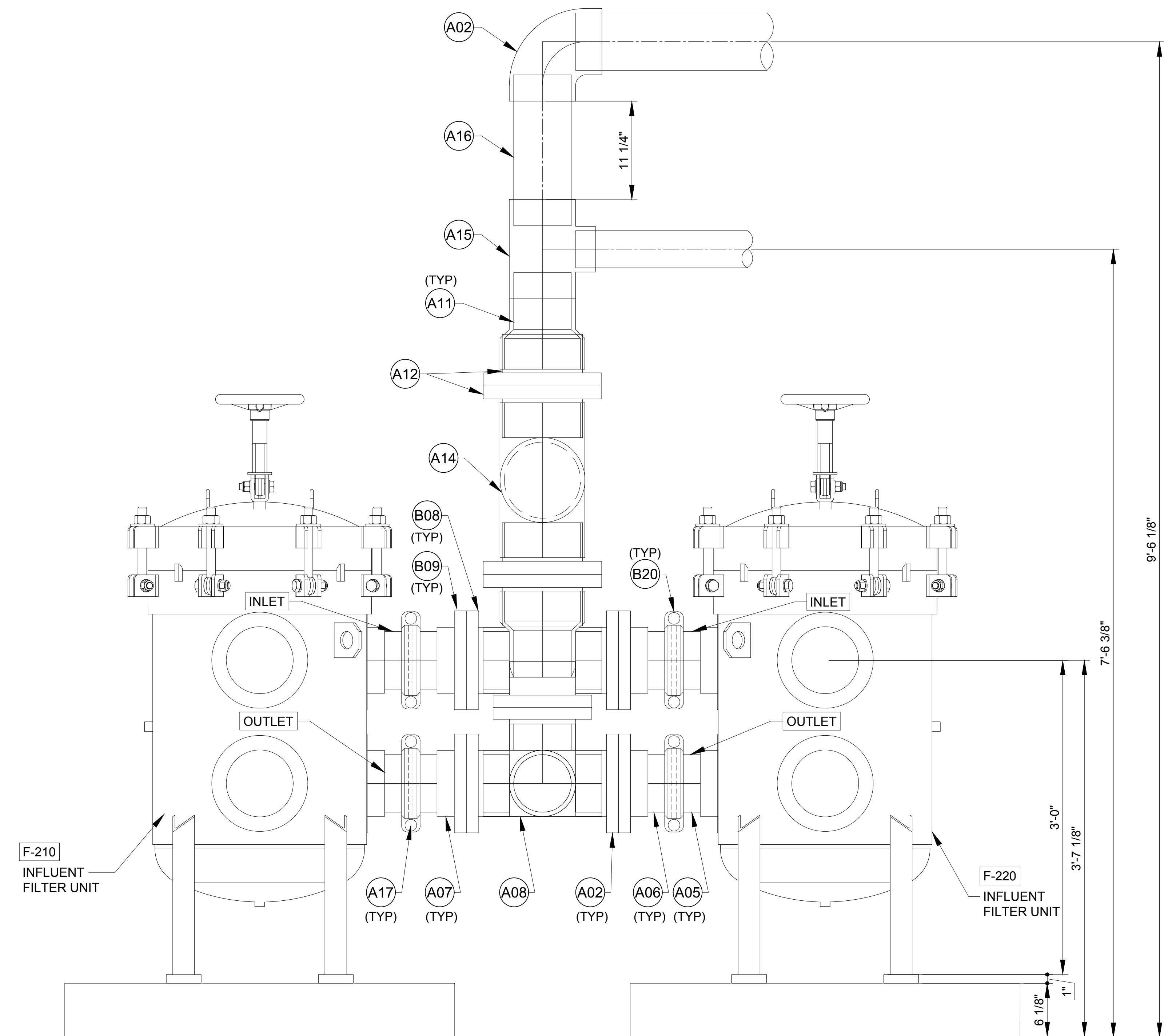
**DISCLAIMER**  
 RJ Barnes and Associates has prepared these layout drawings and material lists in accordance with our interpretation of the project drawings and specifications that were provided. Approval of these drawings and material lists constitute acceptance of our interpretation of material requirements for the subject job. Please check the drawings and material lists carefully to insure they are correct for your project.  
  
 If corrections need to be made, please mark one set of the drawings in a contrasting color and return them to this office with your comments. No material shown in these drawings should be released for manufacture without written approval from the end customer.

REV	PARTICULARS	BY	APP'D	DATE

R. J. Barnes & Associates, 1442 S 500 E - STE 300, American Fork, UT 84003



SECTION-A



SECTION-B

OWNER:-

ENGINEER:-

**DISCLAIMER**  
 RJ Barnes and Associates has prepared these layout drawings and material lists in accordance with our interpretation of the project drawings and specifications that were provided. Approval of these drawings and material lists constitute acceptance of our interpretation of material requirements for the subject job. Please check the drawings and material lists carefully to insure they are correct for your project.

If corrections need to be made, please mark one set of the drawings in a contrasting color and return them to this office with your comments. No material shown in these drawings should be released for manufacture without written approval from the end customer.

REV	PARTICULARS	BY	APP'D	DATE

R. J. Barnes & Associates, 1442 S 500 E - STE 300, American Fork, UT 84003

BILL OF MATERIALS					
6" OUTLET PIPING (DWG #: D104 & D301)					
TAG #	QTY	SIZE	DESCRIPTION	ACTUAL LENGTH	NOTES
A01	9	6"	PVC SPIGOT FLANGE	0'- 1 7/8"	
A02	4	6"	PVC 90 DEGREE BEND	CC = 6-13/16" X 6 -13/16"	
A03	2	6"	WAFER BUTTERFLY VALVE	LL = 2.21"	
A04	2	6"	PVC FLANGE	0'- 3 3/8"	
A05	2	6"	GRV X PE PIPE	0'-3"	
A06	2	6"	GRV X PE PIPE	0'-3"	
A07	2	6"	PVC FLANGE	0'- 3 3/8"	
A08	1	6" X 6"	PVC TEE	CC = 6-25/32" X 6-25/32"	
A09	1	6"	PVC FLANGE	0'- 3 3/8"	
A10	1	6"	PVC PIPE	0'- 1 3/4"	
A11	2	8" X 6"	PVC REDUCER	LL = 8-1/16"	
A12	3	8"	PVC SPIGOT FLANGE	0'- 1 7/8"	
A13	1	8"	PVC FLANGE	0'- 1 7/8"	
A14	1	8" X 8"	PVC TEE	CC = 8-7/8" X 8-7/8"	
A15	1	6" X 4"	PVC TEE	CC = 5-11/16" X 6-1/16" X 5-11/16"	
A16	1	6"	PVC PIPE	0'- 11 1/4"	

6" INLET PIPING (DWG #: D104 & D301)					
A17	2	6"	VICTAULIC COUPLING (STYLE 357)		
B01	1	8"	GRV X FLG CL53 / CL / PC	1'- 0"	
B02	4	8"	PVC FLANGE	0'- 4 3/8"	
B03	1	8"	PVC PIPE	0'- 5 1/4"	
B04	5	8"	PVC SPIGOT FLANGE	0'- 1 7/8"	
B05	1	8" X 6"	PVC TEE	CC = 7-29/32" X 8" X 7-29/32"	
B06	1	8" X 8"	PVC TEE	CC = 8-7/8" X 8-7/8"	
B07	1	8" X 2"	DI BLIND FLANGE W/ 2" TAP		
B08	8	6"	PVC SPIGOT FLANGE	0'- 1 7/8"	
B09	6	6"	PVC FLANGE	0'- 3 3/8"	
B10	1	6"	PE X GRV PIPE	1'- 6 1/8"	
B11	1	6"	GRV X PE PIPE	1'- 6 1/8"	
B12	1	6" X 6"	PVC TEE	CC = 6-25/32" X 6-25/32"	
B13	2	6"	PE X GRV PIPE	0'-3"	
B14	2	6"	GRV X PE PIPE	0'-3"	
B15	2	6"	WAFER BUTTERFLY VALVE	LL = 2.21"	
B16	2	6"	PVC 90 DEGREE BEND	CC = 6-13/16" X 6 -13/16"	
B17	1	8"	FLG BUTTERFLY VALVE	LL = 6.00"	
B18	1	8"	PE X GRV PIPE	1'- 9 3/8"	

B19	1	8"	GRV X PE PIPE	1'- 9 3/8"	
B20	3	6"	VICTAULIC COUPLING (STYLE 357)		
B21	1	8"	VICTAULIC COUPLING (STYLE 357)		

OWNER:-

ENGINEER:-

**DISCLAIMER**

RJ Barnes and Associates has prepared these layout drawings and material lists in accordance with our interpretation of the project drawings and specifications that were provided. Approval of these drawings and material lists constitute acceptance of our interpretation of material requirements for the subject job. Please check the drawings and material lists carefully to insure they are correct for your project.

If corrections need to be made, please mark one set of the drawings in a contrasting color and return them to this office with your comments. No material shown in these drawings should be released for manufacture without written approval from the end customer.

△					
REV		PARTICULARS	BY	APP'D	DATE

R. J. Barnes & Associates, 1442 S 500 E – STE 300, American Fork, UT 84003