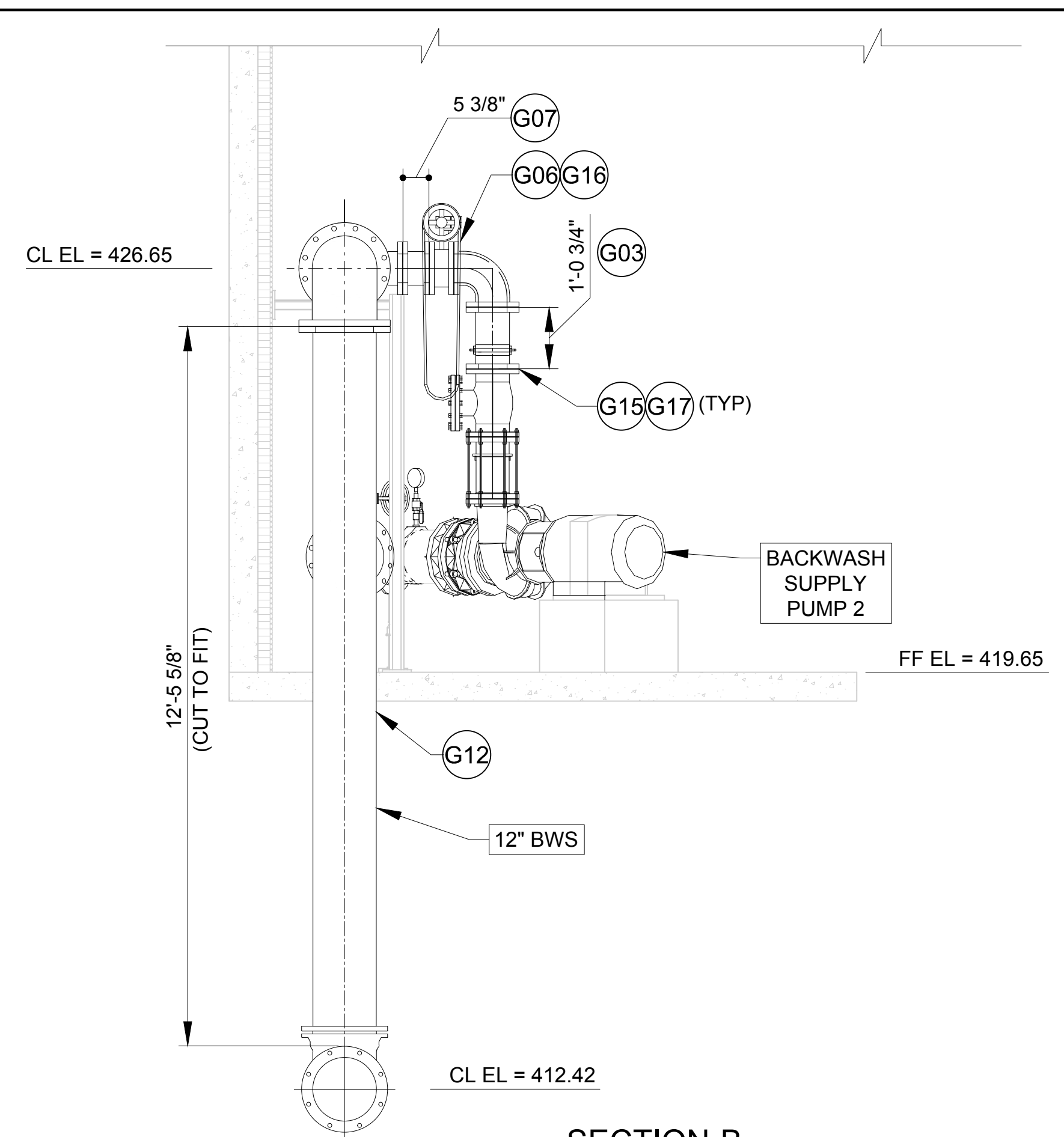


SECTION-A



SECTION-B

BILL OF MATERIALS

10" DIP BWS SUCTION LINE CONNECT TO BACKWASH SUPPLY PUMP 1 & 2 INLET  
(DWG #: M8 & M8-A)

TAG #	QTY	SIZE	DESCRIPTION	ACTUAL LENGTH	NOTES
F01	1	10"	RESTRAINED FLANGE COUPLING ADAPTER		
F02	2	10"	FLG 90 DEGREE BEND AWWA - C110 / CL / TN # 90-97 PRIMER		BID LINE # 343
F03	1	10"	FLG X FLG CL53 / CL / TN # 90-97 PRIMER	0'-6 3/4"	BID LINE # 344
F04	3	10"	AWWA C504 FLG BUTTERFLY VALVE W/ HAND WHEEL, FBE (VLV-620, 621 & 642).	LL = 8.00"	BID LINE # 345
F05	1	10"	FLG X FLG CL53 / CL / TN # 90-97 PRIMER	1'-10"	BID LINE # 346
F06	1	10"	FLE WYE - C110 / CL / TN # 90-97 PRIMER		BID LINE # 347
F07	1	10"	FLG X FLG CL53 / CL / TN # 90-97 PRIMER	3'-8 3/8"	BID LINE # 348
F08	1	10"	FLG 45 DEGREE BEND AWWA - C110 / 90-97 PRIMER		BID LINE # 349
F09	1	10"	FLG X PE CL53 / CL / TN # 90-97 PRIMER	2'-6 7/8"	
F10	2	10" X 1"	IPT SADDLE, EPOXY COATED, SST DOUBLE STRAP, FOR DIP		BID LINE # 353
F11	2	10"	FLANGE COUPLING ADAPTER		
F12	1	10"	FLG X PE CL53 / CL / TN # 90-97 PRIMER	1'-4 7/8"	

F13	16	10"	SET 10" BLK A307B BOLT, A563A HVY HEX NUT, 2 - F844 WASHER		BID LINE # 369
F14	16	10"	1/8" FF GARLOCK 3760-U FLG GASKET		BID LINE # 370
6" & 12" DIP BWS FROM DISCHARGE LINE CONNECT TO RESERVOIR INLET (DWG #: M8 & M8-A)					
G01	2	6"	FLG DISMANTLING JOINT, FBE		BID LINE # 355
G02	2	6"	AWWA C508 FLG CHECK VALVE W/ LEVER & WEIGHT FBE (VLV-632 & 643).	LL = 14.00"	BID LINE # 356
G03	2	6"	FLG X FLG CL53 / CL / TN # 90-97 PRIMER	1'-0 3/4"	BID LINE # 357
G04	2	6"	FLG 90 DEGREE BEND AWWA - C110 / CL / TN # 90-97 PRIMER		BID LINE # 358
G05	2	6"	AWWA C504 FLG BUTTERFLY VALVE W/ GO & CHAINWHEEL OPERATOR, FBE (VLV-644 & 624).	LL = 5.00"	BID LINE # 359
G06	2	6"	CHAIN FOR CHAINWHEEL ON BUTTERFLY VALVE		BID LINE # 360
G07	2	6"	FLG X FLG CL53 / CL / TN # 90-97 PRIMER	0'-5 3/8"	BID LINE # 361
G08	2	12" X 6"	FLG TEE AWWA - C110 / CL / TN # 90-97 PRIMER		BID LINE # 362
G09	1	12"	BLIND FLANGE AWWA - C110 / TN # 90-97 PRIMER		BID LINE # 363
G10	1	12"	FLG X FLG CL53 / CL / TN # 90-97 PRIMER	3'-11 3/8"	BID LINE # 364
G11	1	12"	FLG 90 DEGREE BEND AWWA - C110 / 90-97 PRIMER		BID LINE # 365

G12	1	12"	FLG X PE CL53 / CL / TN # 90-97 PRIMER	14'-0"	BID LINE # 366
G13	6	12"	SET 12" BLK A307B BOLT, A563A HVY HEX NUT, 2 - F844 WASHERS		BID LINE # 367
G14	6	12"	1/8" FF GARLOCK 3760-U FLG GASKET		BID LINE # 368
G15	10	6"	SET 6" A307B BOLT, A563A HVY HEX NUT, 2 WASHERS		BID LINE # 371
G16	4	6"	SET 6" A307B, A563A HVY HEX, 2 - F844 WASHER (FOR FLG BFW)		BID LINE # 372
G17	14	6"	1/8" FF GARLOCK 3760-U FLG GASKET		BID LINE # 373
G18	2	6" X 1"	IPT SADDLE, EPOXY COATED, SST DOUBLE STRAP, FOR DIP		BID LINE # 374

STD ABBREVIATIONS & NOTES LEGEND

01. COATING AND LINING.

LINING	COATING
CEMENT MORTAR LINING (CL)	TNEME-ZINC (TN # 90-97 PRIMER)

02. FLG = FLANGE JOINT

03. PE = PLAIN END

04. CL53 = THICKNESS CLASS 53

05. LL = LAYING LENGTH

OWNER:-

ENGINEER:-

DISCLAIMER

RJ Barnes and Associates has prepared these layout drawings and material lists in accordance with our interpretation of the project drawings and specifications that were provided. Approval of these drawings and material lists constitute acceptance of our interpretation of material requirements for the subject job. Please check the drawings and material lists carefully to insure they are correct for your project.

If corrections need to be made, please mark one set of the drawings in a contrasting color and return them to this office with your comments. No material shown in these drawings should be released for manufacture without written approval from the end customer.

△	DRAWING REVISED AS PER COMMENTS	ST	RJB	11/15/2024
REV	PARTICULARS	BY	APP'D	DATE

R. J. Barnes & Associates, 1442 S 500 E - STE 300, American Fork, UT 84003